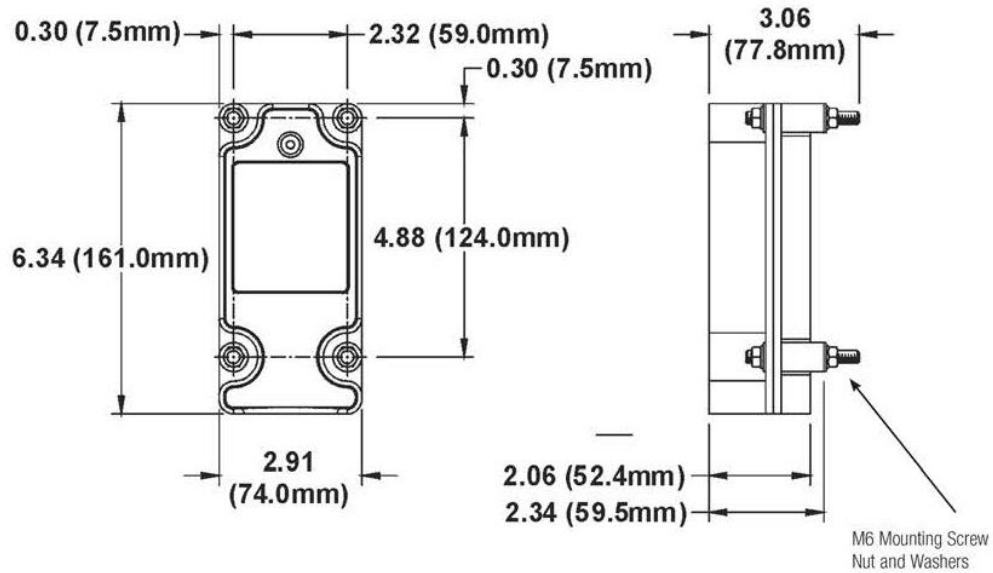
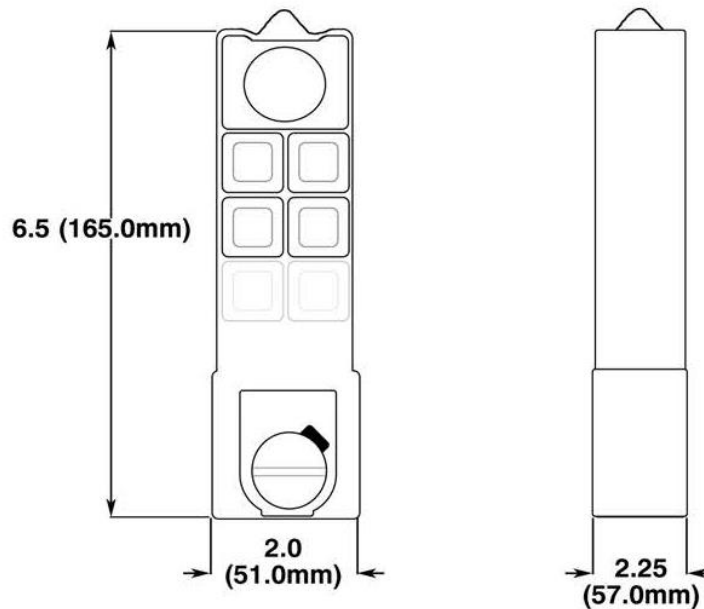


## DIMENSIONS

**400 Series Receiver** Weight: 2.4 lb (1.1 kg) - *Without Cable*



**400 Series Transmitter** Weight: 0.34 lb (0.2 kg) - *Including Batteries*



## SPECIFICATIONS

400 Series has unique and outstanding features and is fully programmable. Best use: Monorail, Electric Chain Hoist, Bridge Crane and Jib Crane. 2-motion, 2-speed Model 4004 and 3-motion 1-speed Model 4008 have positive detent positions, e-stop switch, and removable key.

### 4004: 4 double-step pushbuttons (Up, Down, East, West)



400 Series Transmitter



400 Series Receiver

### 4006: 6 single-step pushbuttons (Up, Down, North, South, East, West)



400 Series Transmitter



400 Series Receiver

#### General Specifications:

Frequency Control: Crystal  
Low Power Indicator  
Pushbutton Jammed Detector  
Operation Range: Up to -328 feet {100 meters)  
Operating Temperature: -49°F ~ 176°F (-45°C ~ +80°C)  
Power Consumption: about 10mW  
Structure: Nylon and Glass Fiber  
Shock Resistant  
Function Programmable

#### Transmitter Specifications:

L X W x H: 6.42" X 1.93" X 1.77" {163 X 49 X 45 mm)  
Weight: 0.55 lbs. {0.3 kg) \*with batteries  
Two {2) AA size batteries

#### Receiver Specifications:

L x W x H: 6.34" X 2.91" X 2.05" (161 X 74 X 52 mm)  
Weight: 2.43 lbs. {1.1 kg) \*without cable  
Input Voltage: AC Type: 24/48/110/220/380V;  
DC Type: 12~24