

End Truck Brochure

ET Series

End Truck Features



- Capacities ranging from 3 tons to 50 tons
- Top-running, under-running end trucks available
- Choose from motorized or push end trucks
- Meets Crane Manufacturers Association of America (CMAA) Class "D" requirements for heavy duty use.
- All bearings are sealed and maintenance-free
- Crane-duty motors and reducers sized for multiple shift operation
- Hardened steel wheels
- End truck wheels have extra wide tread to accommodate possible crane rail misalignment
- Under-hung end truck wheels have a combination tread to ride on both "W" and "S" beams
- All motorized end trucks come with brakes
- The low speed motorized end trucks come with a mechanical soft start
- Variable drive control comes standard with all high-speed motorized end trucks
- Available in 230 or 460 volts

End Truck Construction

Top Running-

Consists of American Standard or Wide Flange beam girders, which are rigidly connected to the top and side of each end truck. Each truck has a driver wheels and a trailer wheels which run on the runway rails. The wheels are mounted on fixed axles and rotate on anti-friction bearings.

Under Hung-

Consists of American Standard or Wide Flange beam girders rigidly connected to the bottom and side of each end truck. Each truck driver has driver wheels and trailer wheels, which run on the runway beams. The wheels are mounted on fixed axles and rotate on anti-friction bearing.

These bridges are driven by a motor and gear case attached to each truck. The motor drives a single wheel at each end truck through the gear case then through a drive pinion and geared wheel arrangement.



ACI Hoist & Crane Inc.
689 S.W. 7th Terrace
Dania, FL 33004
+1-954-367-6116
ACIHoist.com

End Truck Information

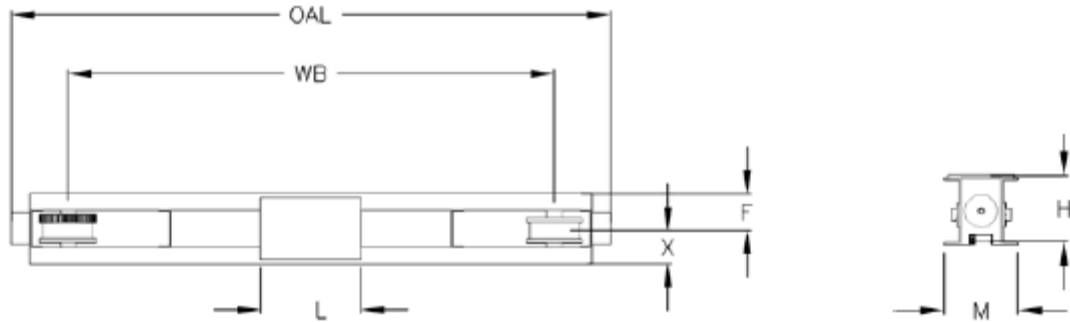
Top Running End Truck

These top running crane bridges are designed to operate on parallel crane runway. Motor and control are designed for: 230V, 460V, or 575V, 3 phases, and a 60 hertz power supply. The bridge is equipped with single, two or variable speed motors are controlled from a pendant push button station. The push button may be located on the bridge or the hoist trolley unit. Top running single girder crane bridges described herein are built in capacities from 1 through 15 ton, spans through 60'-0". Double girder crane bridges described are built in capacities from 1 through 25 tons, spans through 60'-0".

Under Hung End Truck

These under running crane bridges are designed to operate on parallel American Standard or Wide Flange crane runaway beams. Motors and controls are designed for 230V, 460V, or 575V, 3 phases, 60 hertz power supply. The bridge is equipped with single, two or variable speed motors with controlled from a pendant push button station. The push button may be located on the bridge or hoist

ETTP: Top Running Push End Truck Dimensions & Specifications



Cap. (tons)	Model	Wheel Ø (in)	Max Span (ft)	Wheel Base (WB) (ft)	Overall length (OAL) (in)	Height (H) (in)	Width (W) (in)	Width (OW) (in)	Recommended Rail size (ASCE #)
3	ETTP060-032	5	32	4	61	8.4	9.7	4.6	25
	ETTP060-040		40	5	74				
	ETTP060-048		48	6	86				
	ETTP060-060		60	7.5	104				
5	ETTP100-032	6	32	4	5.1	8.4	9.7	4.6	25
	ETTP100-040		40	5	6.1				
	ETTP100-048		48	6	7.1				
	ETTP100-060		60	7.5	8.6				

*Other capacities, wheel sizes and spans are available upon request.

*All of our end trucks are delivered in primer coat. For epoxy blue or yellow color please contact the factory.

*General specifications and dimensions might vary depending on your specific needs.

ETTM: Top Running Motorized End Truck Dimensions & Specifications

Cap (tons)	Model	Wheel Ø (in)	Max Speed travel (ft/min)	Drive (Hp)	Recommended Rail size (ASCE #)
3	ETTM060070-032	5	70	2 X ½	25
	ETTM060140-032		140	2 X 1	
	ETTM060070-040		70	2 X ½	
	ETTM060140-040		140	2 X 1	
	ETTM060070-048		70	2 X ½	
	ETTM060140-048		140	2 X 1	
	ETTM060070-060		70	2 X ½	
	ETTM060140-060		140	2 X 1	
5	ETTM100070-032	6	70	2 X ½	25
	ETTM100140-032		140	2 X 1	
	ETTM100070-040		70	2 X ½	
	ETTM100140-040		140	2 X 1	
	ETTM100070-048		70	2 X ½	
	ETTM100140-048		140	2 X 1	
	ETTM100070-060		70	2 X ½	
	ETTM100140-060		140	2 X 1	
10	ETTM200070-032	8	70	2 X 1	40
	ETTM200140-032		140	2 X 1½	
	ETTM200070-040		70	2 X 1	
	ETTM200140-040		140	2 X 1½	
	ETTM200070-048		70	2 X 1	
	ETTM200140-048		140	2 X 1½	
	ETTM200070-060		70	2 X 1	
	ETTM200140-060		140	2 X 1½	
15	ETTM300070-032	10	70	2 X 1½	60
	ETTM300140-032		140	2 X 5	
	ETTM300070-040		70	2 X 1½	
	ETTM300140-040		140	2 X 5	
	ETTM300070-048		70	2 X 1½	
	ETTM300140-048		140	2 X 5	
	ETTM300070-060		70	2 X 1½	
	ETTM300140-060		140	2 X 5	

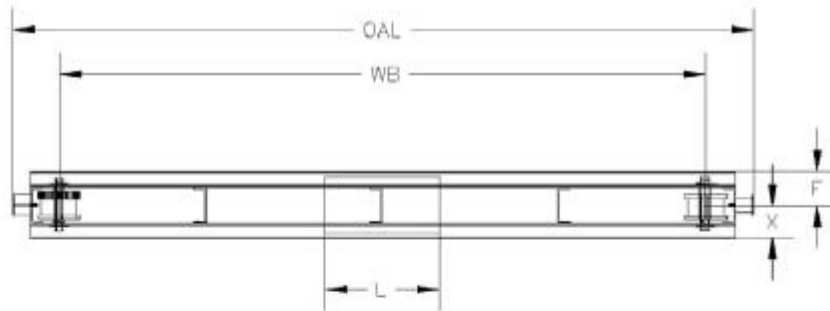
*The weight does not include the control box.

*All of our end trucks are delivered in primer coat. For epoxy blue or yellow color please contact the factory.

* We do not recommend single speed motor above 90 fpm.

* General specifications and dimensions might vary depending on your specific needs.

ETUP: Under Hung Push End Truck Dimensions & Specifications



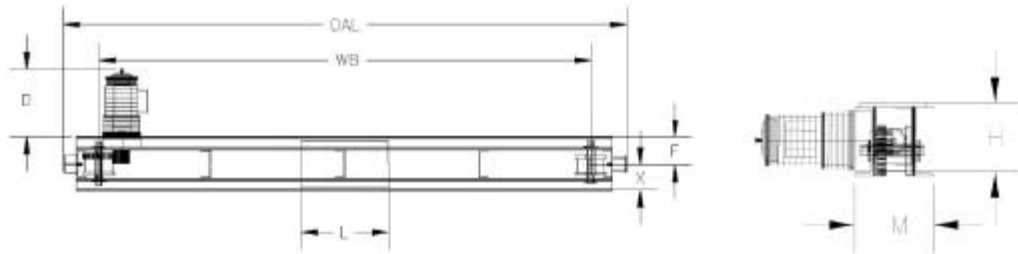
Cap (tons)	Model	Wheel (in)	Max Span (ft)	Wheel base (WB) (ft)	Overall length (OAL) (in)
3	ETUP060-032	4	32	4	70
	ETUP060-040		40	5	82
	ETUP060-048		48	6	94
	ETUP060-060		60	7.5	112
5	ETUP100-032	5	32	4	70
	ETUP100-040		40	5	82
	ETUP100-048		48	6	94
	ETUP100-060		60	7.5	112

* Other capacities, wheel sizes and spans are available upon request.

* All of our end trucks are delivered in primer coat. For epoxy blue or yellow color please contact the factory.

* General specifications and dimensions might vary depending on your specific needs.

ETUM: Under Hung Motorized End Trucks Dimensions & Specifications



Cap (tons)	Model	Wheel (in)	Max Span (ft)	Wheel base (WB) (ft)	Overall length (OAL) (in)	Max Speed Travel (fpm)	Drive (HP)
3	ETUM060070-032	4	32	4	70	60	2 X 1/2
	120					2 X 1	
	ETUM060140-032		40	5	82	60	2 X 1/2
	120					2 X 1	
	ETUM060070-040		48	6	94	60	2 X 1/2
	120					2 X 1	
	ETUM060140-040		60	7.5	112	60	2 X 1/2
120	2 X 1						
5	ETUM060070-048	5	32	4	70	60	2 X 1/2
	120					2 X 1	
	ETUM060140-032		40	5	82	60	2 X 1/2
	120					2 X 1	
	ETUM100070-032		48	6	94	60	2 X 1/2
	120					2 X 1	
	ETUM100140-032		60	7.5	112	60	2 X 1/2
	120					2 X 1	
ETUM100070-040	60	7.5	112	60	2 X 1/2		
120				2 X 1			
ETUM100140-040	60	7.5	112	60	2 X 1/2		
120				2 X 1			

*Other capacities, wheel sizes and spans are available upon request.

*The weight does not include the control box.

*All of our end trucks are delivered in primer coat. For epoxy blue or yellow color please contact the factory.

* We do not recommend single speed motor above 90 fpm.

* General specifications and dimensions might vary depending on your specific needs.