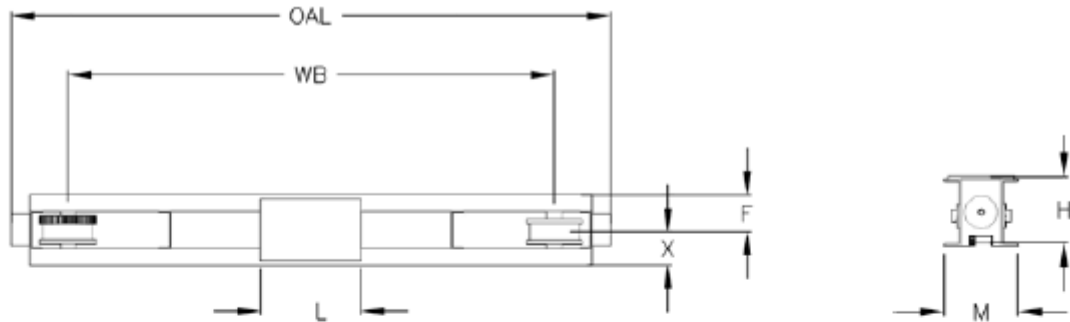


ETTP: Top Running Push End Truck Dimensions & Specifications



Cap. (tons)	Model	Wheel Ø (in)	Max Span (ft)	Wheel Base (WB) (ft)	Overall length (OAL) (in)	Height (H) (in)	Width (W) (in)	Width (OW) (in)	Recommended Rail size (ASCE #)
3	ETTP060-032	5	32	4	61	8.4	9.7	4.6	25
	ETTP060-040		40	5	74				
	ETTP060-048		48	6	86				
	ETTP060-060		60	7.5	104				
5	ETTP100-032	6	32	4	5.1	8.4	9.7	4.6	25
	ETTP100-040		40	5	6.1				
	ETTP100-048		48	6	7.1				
	ETTP100-060		60	7.5	8.6				

*Other capacities, wheel sizes and spans are available upon request.

*All of our end trucks are delivered in primer coat. For epoxy blue or yellow color please contact the factory.

*General specifications and dimensions might vary depending on your specific needs.

ETTM: Top Running Motorized End Truck Dimensions & Specifications

Cap (tons)	Model	Wheel Ø (in)	Max Speed travel (ft/min)	Drive (Hp)	Recommended Rail size (ASCE #)
3	ETTM060070-032	5	70	2 X ½	25
	ETTM060140-032		140	2 X 1	
	ETTM060070-040		70	2 X ½	
	ETTM060140-040		140	2 X 1	
	ETTM060070-048		70	2 X ½	
	ETTM060140-048		140	2 X 1	
	ETTM060070-060		70	2 X ½	
	ETTM060140-060		140	2 X 1	
5	ETTM100070-032	6	70	2 X ½	25
	ETTM100140-032		140	2 X 1	
	ETTM100070-040		70	2 X ½	
	ETTM100140-040		140	2 X 1	
	ETTM100070-048		70	2 X ½	
	ETTM100140-048		140	2 X 1	
	ETTM100070-060		70	2 X ½	
	ETTM100140-060		140	2 X 1	
10	ETTM200070-032	8	70	2 X 1	40
	ETTM200140-032		140	2 X 1½	
	ETTM200070-040		70	2 X 1	
	ETTM200140-040		140	2 X 1½	
	ETTM200070-048		70	2 X 1	
	ETTM200140-048		140	2 X 1½	
	ETTM200070-060		70	2 X 1	
	ETTM200140-060		140	2 X 1½	
15	ETTM300070-032	10	70	2 X 1½	60
	ETTM300140-032		140	2 X 5	
	ETTM300070-040		70	2 X 1½	
	ETTM300140-040		140	2 X 5	
	ETTM300070-048		70	2 X 1½	
	ETTM300140-048		140	2 X 5	
	ETTM300070-060		70	2 X 1½	
	ETTM300140-060		140	2 X 5	

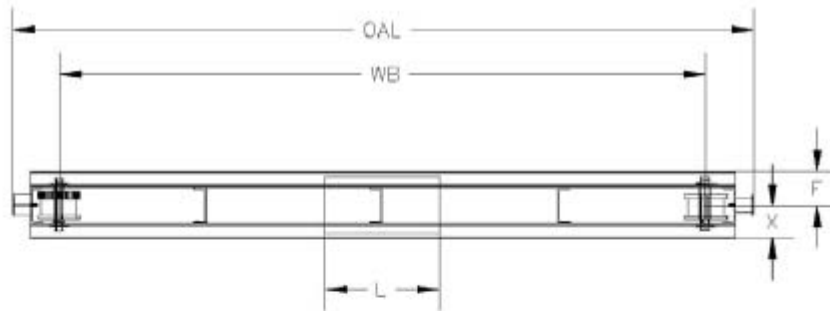
*The weight does not include the control box.

*All of our end trucks are delivered in primer coat. For epoxy blue or yellow color please contact the factory.

* We do not recommend single speed motor above 90 fpm.

* General specifications and dimensions might vary depending on your specific needs.

ETUP: Under Hung Push End Truck Dimensions & Specifications



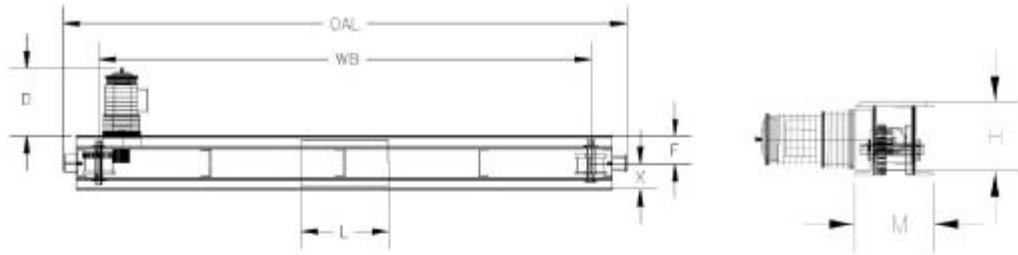
Cap (tons)	Model	Wheel (in)	Max Span (ft)	Wheel base (WB) (ft)	Overall length (OAL) (in)
3	ETUP060-032	4	32	4	70
	ETUP060-040		40	5	82
	ETUP060-048		48	6	94
	ETUP060-060		60	7.5	112
5	ETUP100-032	5	32	4	70
	ETUP100-040		40	5	82
	ETUP100-048		48	6	94
	ETUP100-060		60	7.5	112

* Other capacities, wheel sizes and spans are available upon request.

* All of our end trucks are delivered in primer coat. For epoxy blue or yellow color please contact the factory.

* General specifications and dimensions might vary depending on your specific needs.

ETUM: Under Hung Motorized End Trucks Dimensions & Specifications



Cap (tons)	Model	Wheel (in)	Max Span (ft)	Wheel base (WB) (ft)	Overall length (OAL) (in)	Max Speed Travel (fpm)	Drive (HP)
3	ETUM060070-032	4	32	4	70	60	2 X ½
	120					2 X 1	
	ETUM060070-040		40	5	82	60	2 X ½
	120					2 X 1	
	ETUM060070-048		48	6	94	60	2 X ½
	120					2 X 1	
	ETUM060070-060		60	7.5	112	60	2 X ½
	120					2 X 1	
5	ETUM100070-032	5	32	4	70	60	2 X ½
	120					2 X 1	
	ETUM100070-040		40	5	82	60	2 X ½
	120					2 X 1	
	ETUM100070-048		48	6	94	60	2 X ½
	120					2 X 1	
	ETUM100070-060		60	7.5	112	60	2 X ½
	120					2 X 1	

*Other capacities, wheel sizes and spans are available upon request.

*The weight does not include the control box.

*All of our end trucks are delivered in primer coat. For epoxy blue or yellow color please contact the factory.

* We do not recommend single speed motor above 90 fpm.

* General specifications and dimensions might vary depending on your specific needs.