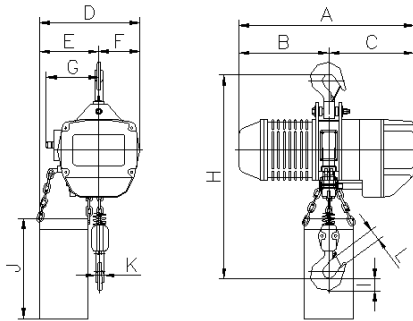
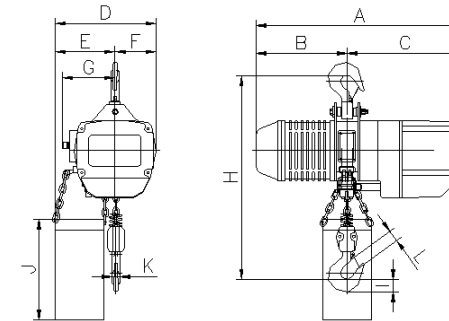
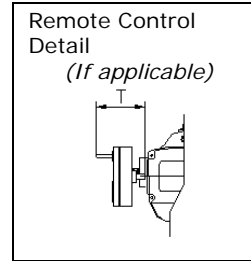


ELECTRIC CHAIN HOIST DIMENSION AND SPECIFICATIONS



Single Speed



Hoist Control Options

¼ Ton- 2 Ton (1 Chain)

4.2.1: SPECIFICATION & DIMENSIONS:

Capacity (ton)	Model Number	Hoist Lift Speed (ft/min)	No. of Chain Falls	Load Chain Dia. (in)	Hoist Motor 3 Ph / 60 Hz			Dimension (in)									Special Dim. (in)	Approx. Gross Weight 1-sp Hoist (lbs)
					Hp	Rated Current		H Headroom*	D	E*	F	G	I	J*	K	L		
						230 V (amps)	460 V (amps)											
1/4	ECHH-00518	18	1	0.28	1.3	8.0	4.0	22.0	11.8	7.0	4.8	6.3	1.4	11.2	0.9	1.3	Table 1	138
	ECHH-00526	26			1.3	8.0	4.0	22.0	11.8	7.0	4.8	6.3	1.4	11.2	0.9	1.3	Table 1	138
	ECHH-00544	44			2.0	8.0	4.0	22.0	11.8	7.0	4.8	6.3	1.4	11.2	0.9	1.3	Table 2	138
1/2	ECHH-01018	18			1.3	8.0	4.0	22.0	11.8	7.0	4.8	6.3	1.4	11.2	0.9	1.3	Table 1	138
	ECHH-01026	26			1.3	8.0	4.0	22.0	11.8	7.0	4.8	6.3	1.4	11.2	0.9	1.3	Table 1	138
	ECHH-01044	44			2.0	8.0	4.0	22.0	11.8	7.0	4.8	6.3	1.4	11.2	0.9	1.3	Table 2	138
1	ECHH-02018	18			1.3	8.0	4.0	22.0	11.8	7.0	4.8	6.3	1.5	11.2	0.9	1.3	Table 1	138
	ECHH-02026	26			2.0	10.0	5.0	22.0	11.8	7.0	4.8	6.3	1.5	11.2	0.9	1.3	Table 2	138

Table 1	Dimensions (in)			
	A	B	C	T
1-Sp Hoist	20.8	10.7	10.1	6.0
2-Sp Hoist	20.8	10.7	10.1	6.0
VFD Hoist	24.3	10.7	13.6	6.0

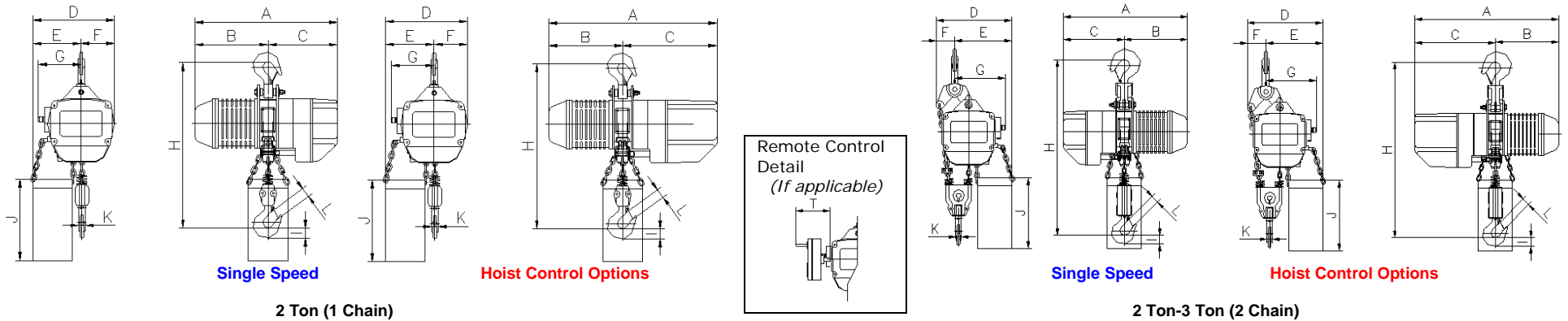
Table 2	Dimensions (in)			
	A	B	C	T
1-Sp Hoist	20.8	10.7	10.1	6.0
2-Sp Hoist	21.6	11.5	10.1	6.0
VFD Hoist	24.3	10.7	13.6	6.0

Hoist Speed:

- Dual Speed (2-Speed, 3:1 Ratio)
- Variable Frequency Drive (2-Speed, 6:1 Ratio)
- Other configurations available upon request

Special Notes:

- * Dimensions are based on 10 ft Lift.
- † Contact us for additional flange width



Capacity (ton)	Model Number	Hoist Lift Speed (ft/min)	No. of Chain Falls	Load Chain Dia. (in)	Hoist Motor 3 Ph / 60 Hz			Dimension (in)									Special Dim. (in)	Approx. Gross Weight 1-sp Hoist (lbs)
					Hp	Rated Current		H Headroom*	D	E*	F	G	I	J*	K	L		
						230 V (amps)	460 V (amps)											
2	ECHH-04009	9	2	0.28	1.3	8.0	4.0	27.6	12.5	9.4	3.2	8.6	1.5	11.2	0.9	1.3	Table 1	168
	ECHH-04013	13	2		2.0	10.0	5.0	30.1	12.5	9.4	3.2	8.6	1.5	11.2	0.9	1.3	Table 2	168
	ECHH-04026	26	1		4.0	20.0	10.0	30.1	16.3	10.1	6.2	7.5	2.0	14.0	1.4	1.9	Table 3	270
3	ECHH-06017	17	2	0.39	4.0	20.0	10.0	35.1	16.5	12.4	2.9	9.6	2.0	14.0	1.4	1.9	Table 3	335
5	ECHH-10010	10	2	0.43	4.0	19.0	10.0	36.6	16.5	12.4	3.7	9.6	2.5	14.0	1.8	2.2	Table 3	335

Table 1	Dimensions (in)			
	A	B	C	T
1-Sp Hoist	20.8	10.7	10.1	6.0
2-Sp Hoist	20.8	10.7	10.1	6.0
VFD Hoist	24.3	10.7	13.6	6.0

Table 2	Dimensions (in)			
	A	B	C	T
1-Sp Hoist	20.8	10.7	10.1	6.0
2-Sp Hoist	21.6	11.5	10.1	6.0
VFD Hoist	24.3	10.7	13.6	6.0

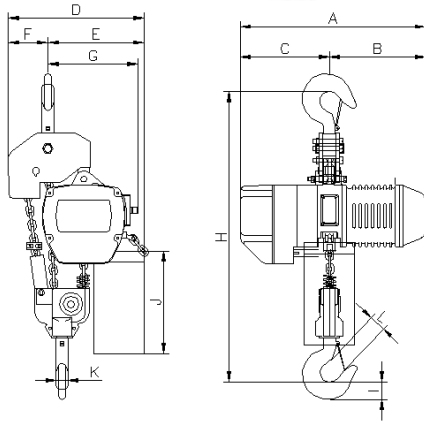
Table 3	Dimensions (in)			
	A	B	C	T
1-Sp Hoist	24.5	11.9	12.6	6.0
2-Sp Hoist	25.5	12.9	12.6	6.0
VFD Hoist	24.5	11.9	12.6	6.0

Special Notes:

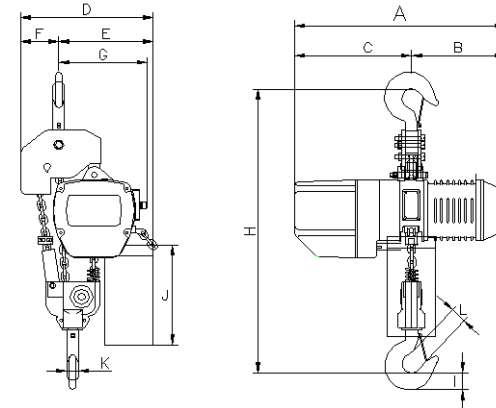
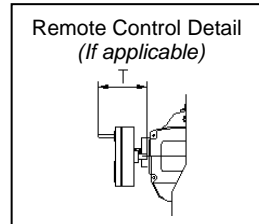
- * Dimensions are based on 10 ft Lift.
- † Contact us for additional flange width

Hoist Speed:

- Dual Speed (2-Speed, 3:1 Ratio)
- Variable Frequency Drive (2-Speed, 6:1 Ratio)
- Other configurations available upon request



Single Speed



Hoist Control Options

3 Ton (3 Chain)

Capacity (ton)	Model Number	Hoist Lift Speed (ft/min)	No. of Chain Falls	Load Chain Dia. (in)	Hoist Motor 3 Ph / 60 Hz			Dimension (in)										Special Dim. (in)	Approx. Gross Weight 1-sp Hoist (lbs)
					Hp	Rated Current		H Headroom*	D	E*	F	G	I	J*	K	L			
						230 V (amps)	460 V (amps)												
3	ECHH-06006	6	3	0.28	1.3	10.0	5.0	31.6	15.8	11.2	4.6	10.4	2.0	14.0	1.4	1.8	Table 1	240	
3	ECHH-06009	9	3	0.28	2.0	10.0	5.0	31.6	15.8	11.2	4.6	10.4	2.0	14.0	1.4	1.8	Table 2	240	

Table 1	Dimensions (in)			
	A	B	C	T
1-Sp Hoist	20.8	10.7	10.1	6.0
2-Sp Hoist	20.8	10.7	10.1	6.0
VFD Hoist	24.3	10.7	13.6	6.0

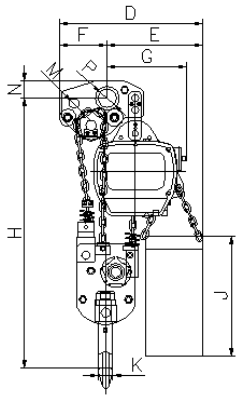
Table 2	Dimensions (in)			
	A	B	C	T
1-Sp Hoist	20.8	10.7	10.1	6.0
2-Sp Hoist	21.6	11.5	10.1	6.0
VFD Hoist	24.3	10.7	13.6	6.0

Special Notes:

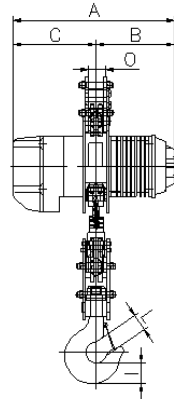
- * Dimensions are based on 10 ft Lift.
- † Contact us for additional flange width

Hoist Speed:

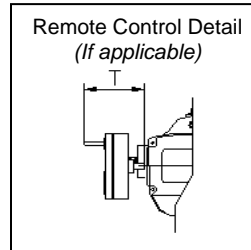
- Dual Speed (2-Speed, 3:1 Ratio)
- Variable Frequency Drive (2-Speed, 6:1 Ratio)
- Other configurations available upon request



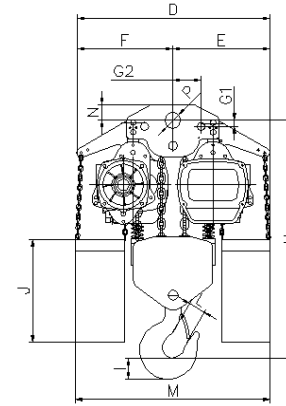
Single Speed



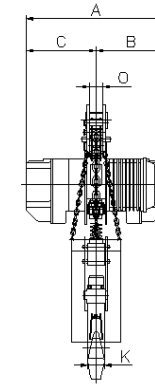
Hoist Control Options



7 1/2 Ton (2 Chain)



Single Speed



Hoist Control Options

10 Ton (4 Chain)

Capacity (ton)	Model Number	Hoist Lift Speed (ft/min)	No. of Chain Falls	Load Chain Dia. (in)	Hoist Motor 3 Ph / 60 Hz			Dimension (in)										Special Dim. (in)	Approx. Gross Weight 1-sp Hoist (lbs)
					Hp	Rated Current		H Headroom m*	D	E*	F	I	J*	K	L	N	O		
						230 V (amps)	460 V (amps)												
7 1/2	ECHH-15007	7	2	0.43	4.0	19.0	10.0	38.6	21.7	14.4	7.3	3.1	14.0	2.2	2.8	2.6	38.6	Table 1	480
10	ECHH-20010	10	4	0.43	2 x 4.0	2 x 10.0	2 x 10.0	42.1	34.4	17.2	17.2	3.8	14.0	3.1	2.9	2.7	2.3	Table 2	810

Table 1	Dimensions (in)						
	A	B	C	G	M	P	T
1-Sp Hoist	24.5	11.9	12.6	11.7	1.3	2.5	5.9
2-Sp Hoist	25.5	12.9	12.6	11.7	1.3	2.5	5.9
VFD Hoist	24.5	11.9	12.6	11.7	1.3	2.5	5.9

Table 2	Dimensions (in)						
	A	B	C	G1/G2	M(*)	P	T
1-Sp Hoist	25.2	12.6	12.6	1.0/5.0	34.6	2.7	5.9
2-Sp Hoist	25.8	12.9	12.9	1.0/5.0	34.6	2.7	5.9
VFD Hoist	25.2	12.6	12.6	1.0/5.0	34.6	2.7	5.9

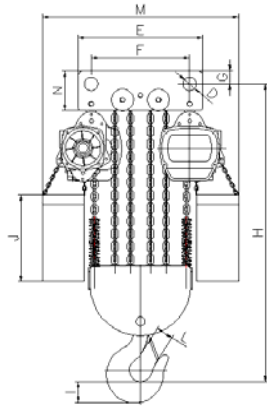
Special Notes:

* Dimensions are based on 10 ft Lift.

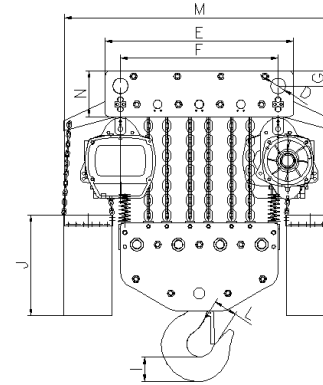
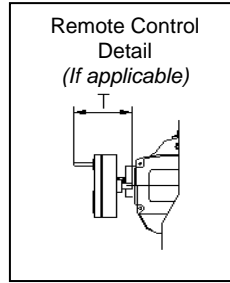
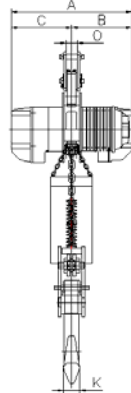
† Contact us for additional flange width & Yoke dimensional drawing.

Hoist Speed:

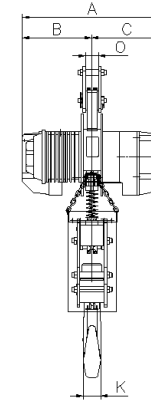
- Dual Speed (2-Speed, 3:1 Ratio)
- Variable Frequency Drive (2-Speed, 6:1 Ratio)
- Other configurations available upon request



Single Speed Hoist Control Options
15 Ton (6 Chain)



Single Speed Hoist Control Options
20 Ton (8 Chain)



Capacity (ton)	Model Number	Hoist Lift Speed (ft/min)	No. of Chain Falls	Load Chain Dia. (in)	Hoist Motor 3 Ph / 60 Hz			Dimension (in)										Special Dim. (in)	Approx. Gross Weight 1-sp Hoist (lbs)
					Hp	Rated Current		H Headroom*	D	E*	F	I	J*	K	L	N	O		
						230 V (amps)	460 V (amps)												
15	ECHH-30007	7	6	0.43	2 x 4.0	2 x 19.0	2 x 19.0	47.8	2.7	26.0	20.5	4.4	19.1	3.3	3.6	8.3	2.3	Table 1	1025
20	ECCH-40005	5	8	0.43	2 x 4.0	2 x 19.0	2 x 19.0	48.6	2.8	33.8	28.3	4.4	19.1	3.1	4.1	8.3	5.1	Table 2	1580

Table 1	Dimensions (in)					
	A	B	C	G	M(*)	T
1-Sp Hoist	25.2	12.6	12.6	2.8	40.8	5.9
2-Sp Hoist	25.8	12.9	12.9	2.8	40.8	5.9
VFD Hoist	25.2	12.6	12.6	2.8	40.8	5.9

Special Notes:

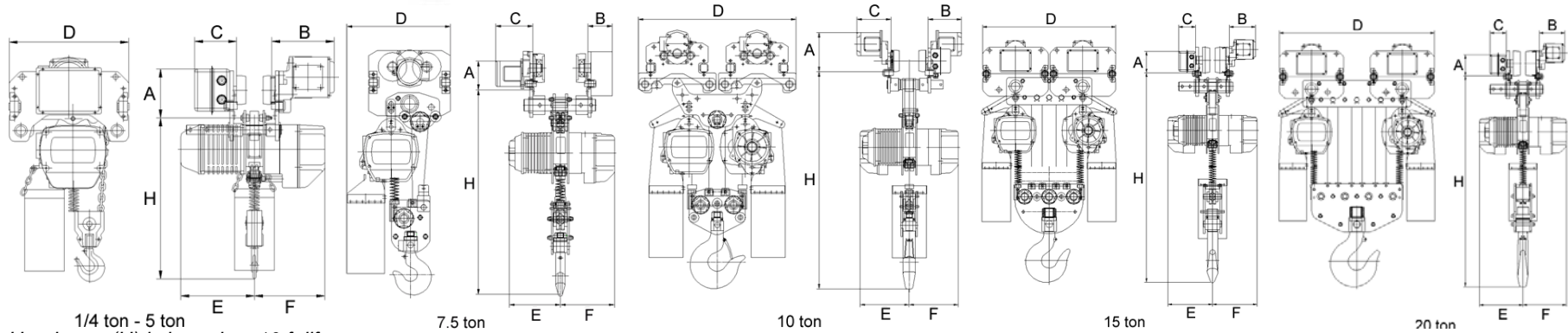
* Dimensions are based on 10 ft Lift.

† Contact us for additional flange width & Yoke dimensional drawing.

Table 2	Dimensions (in)					
	A	B	C	G	M(*)	T
1-Sp Hoist	25.2	12.6	12.6	2.8	48.6	5.9
2-Sp Hoist	25.8	12.9	12.9	2.8	48.6	5.9
VFD Hoist	25.2	12.6	12.6	2.8	48.6	5.9

Hoist Speed:

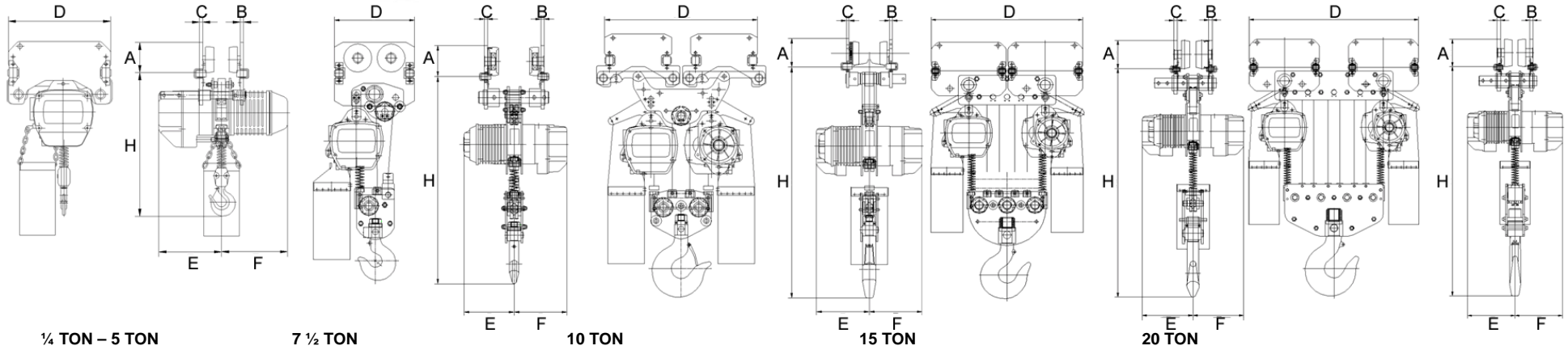
- Dual Speed (2-Speed, 3:1 Ratio)
- Variable Frequency Drive (2-Speed, 6:1 Ratio)
- Other configurations available upon request



1/4 ton - 5 ton
Headroom (H) is based on 10 ft lift

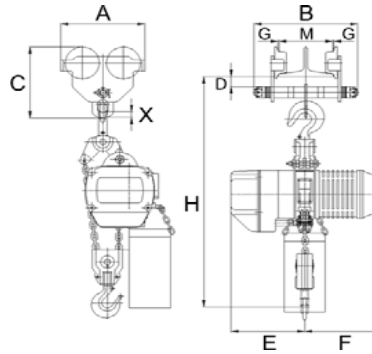
Capacity (ton)	Model Number	Lift (ft)	Lift Speed (ft/min)	No. of Chain Falls	Load Chain Diameter (in)	Hoist Motor			Trolley Motor						H Headroom (in)(*)	A (in)	B (in)	C (in)	D (in)	E (in)	F (in)	Flange Width Range (in)
						HP	Rated Current		HP	50 fpm Rated Current		100 fpm Rated Current										
							@ 230V (amps)	@ 460V (amps)		@ 230V (amp)	@ 460V (amp)	HP	@ 230V (amp)	@ 460V (amp)								
1/4	ECHM-00518	10	18	1	0.28	1.3	8	4	0.5	1.34	0.68	0.5	1.53	0.76	19.5	5.6	9.4	9.2	19.8	11	11	3-7
	ECHM-00526		26	1	0.28	1.3	8	4	0.5	1.34	0.68	0.5	1.53	0.76	19.5	5.6	9.4	9.2	19.8	11	11	3-7
	ECHM-00544		44	1	0.28	2	8	4	0.5	1.34	0.68	0.5	1.53	0.76	19.5	5.6	9.4	9.2	19.8	11	11	3-7
1/2	ECHM-01018	10	18	1	0.28	1.3	8	4	0.5	1.34	0.68	0.5	1.53	0.76	19.5	5.6	9.4	9.2	19.8	11	11	3-7
	ECHM-01026		26	1	0.28	1.3	8	4	0.5	1.34	0.68	0.5	1.53	0.76	19.5	5.6	9.4	9.2	19.8	11	11	3-7
	ECHM-01044		44	1	0.28	2	8	4	0.5	1.34	0.68	0.5	1.53	0.76	19.5	5.6	9.4	9.2	19.8	11	11	3-7
1	ECHM-02018	10	18	1	0.28	1.3	8	4	0.5	1.34	0.68	0.5	1.53	0.76	19.5	5.6	9.4	9.2	19.8	11	11	3-7
	ECHM-02026		26	1	0.28	2	10	5	0.5	1.34	0.68	0.5	1.53	0.76	19.5	5.8	11	9.2	20.5	11	11	3-7
2	ECHM-04009	10	9	2	0.28	1.3	8	4	0.5	1.34	0.68	0.5	1.53	0.76	22.0	5.6	9.4	9.2	20.5	11	11	3-7
	ECHM-04013		13	2	0.28	2	10	5	0.5	1.34	0.68	0.5	1.53	0.76	26.4	5.8	11	9.2	20.5	11	11	3-7
	ECHM-04026		26	1	0.39	4	19	10	1	1.34	0.68	1	2.13	1.07	26.4	6.1	9.8	9.2	22	12	13	3-7
3	ECHM-06006	10	6	3	0.28	1.3	10	5	1	1.34	0.68	1	2.13	1.07	28.7	5.6	9.4	9.2	20.5	11	11	5-8
	ECHM-06009		9	3	0.28	2	10	5	1	1.34	0.68	1	2.13	1.07	28.7	5.6	9.4	9.2	20.5	12	11	5-8
	ECHM-06017		17	2	0.39	4	19	10	1	1.34	0.68	1	2.13	1.07	32.0	7.3	9.8	9.2	20.5	12	13.6	5-8
5	ECHM-10010	10	10	2	0.43	4	19	10	1	1.34	0.68	1	2.13	1.07	33.8	6.1	9.8	9.2	24	12	13.6	5-8
7 1/2	ECHM-15007		7	3	0.43	4	19	10	1	1.34	0.68	1	2.13	1.07	43.4	6.1	9.8	11.5	27	12	13.6	6-11
10	ECHM-20010	10	10	4	0.43	2 x (4.0)	2 x (19)	2 x (10)	2 x (.5)	2 x (1.34)	2 x (0.68)	2 x (1)	2 x (2.13)	2 x (1.07)	49.7	7.6	11.5	11.5	36	13.6	13.6	6-11
15	ECHM-30007		7	6	0.43	2 x (4.0)	2 x (19)	2 x (10)	4 x (.5)	4 x (1.34)	4 x (0.68)	4 x (1)	4 x (2.13)	4 x (1.07)	51.9	10.2	11.5	11.5	40.6	13.6	13.6	6-11
20	ECHM-40005	10	5	8	0.43	2 x (4.0)	2 x (19)	2 x (10)	4 x (.5)	4 x (1.34)	4 x (0.68)	4 x (1)	4 x (2.13)	4 x (1.07)	52.7	10.2	11.5	11.5	48.5	13.6	13.6	6-11

ACI HOIST & CRANE



Headroom (H) is based on 10 ft lift

Capacity (ton)	Model Number	Standard Lift (ft)	Lift Speed (ft/min)	No. of Chain Falls	Load Chain Diameter (in)	Hoist Motor			H Headroom (in)(*)	A (in)	B (in)	C (in)	D (in)	E (in)	F (in)	Flange Width Range (in)
						HP	Rated Current									
							@ 230V (amps)	@ 460V (amps)								
1/4	ECHL-00518	10	18	1	0.28	1.3	8	4	22.0	4.2	0.5	0.5	17	11	11	3 - 5
	ECHL-00526		26	1	0.28	1.3	8	4	22.0	4.2	0.5	0.5	17	11	11	3 - 5
	ECHL-00544		44	1	0.28	2	8	4	22.0	4.2	0.5	0.5	17	11	11	3 - 5
1/2	ECHL-01018		18	1	0.28	1.3	8	4	22.0	4.2	0.5	0.5	17	11	11	3 - 5
	ECHL-01026		26	1	0.28	1.3	8	4	22.0	4.2	0.5	0.5	17	11	11	3 - 5
	ECHL-01044		44	1	0.28	2	8	4	22.0	4.2	0.5	0.5	17	11	11	3 - 5
1	ECHL-02018		18	1	0.28	1.3	8	4	22.0	4.2	0.5	0.5	17	11	11	3 - 5
	ECHL-02026		26	1	0.28	2	10	5	22.0	4.2	0.5	0.5	17	11	11	3 - 5
2	ECHL-04009		9	2	0.28	1.3	8	4	27.6	4.2	0.5	0.5	17	11	11	4 - 6
	ECHL-04013		13	2	0.28	2	10	5	30.1	4.2	0.5	0.5	17	11	11	4 - 6
	ECHL-04026		26	1	0.39	4	19	10	30.1	4.2	0.5	0.5	17	12	14	4 - 6
3	ECHL-06006		6	3	0.28	1.3	10	5	31.6	4.2	0.5	0.5	21	11	11	5 - 7
	ECHL-06009		9	3	0.28	2	10	5	31.6	4.2	0.5	0.5	20	12	14	5 - 7
	ECHL-06017		17	2	0.39	4	19	10	35.1	4.9	0.6	0.6	20	12	14	5 - 7
5	ECHL-10010		10	2	0.43	4	19	10	36.6	5.5	0.6	0.6	21	12	13.6	5 - 7

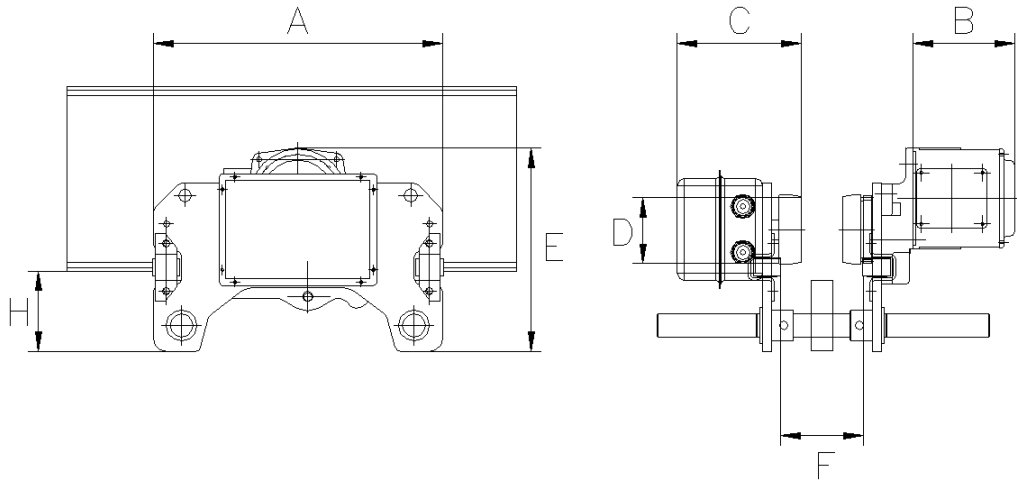


1/4 - 5 Ton

Capacity (ton)	Model Number	Standard Lift (ft)	Lift Speed (ft/min)	No. of Chain Falls	Load Chain Diameter (in)	Hoist Motor			H Headroom (in)	A (in)	B (in)	C (in)	D (in)	E (in)	F (in)	Flange Width Range (in)
						HP	Rated Current									
							@ 230V (amps)	@ 460V (amps)								
1/4	ECHP-00518	10	18	1	0.28	1.3	8	4	26.1	4.2	0.5	0.5	16.5	10.7	11	3 - 5
	ECHP-00526		26	1	0.28	1.3	8	4	26.1	4.2	0.5	0.5	16.5	10.7	11	3 - 5
	ECHP-00544		44	1	0.28	2	8	4	26.1	4.2	0.5	0.5	16.5	10.7	11	3 - 5
1/2	ECHP-01018		18	1	0.28	1.3	8	4	26.1	4.2	0.5	0.5	16.5	10.7	11	3 - 5
	ECHP-01026		26	1	0.28	1.3	8	4	26.1	4.2	0.5	0.5	16.5	10.7	11	3 - 5
	ECHP-01044		44	1	0.28	2	8	4	26.1	4.2	0.5	0.5	16.5	10.7	11	3 - 5
1	ECHP-02018		18	1	0.28	1.3	8	4	26.9	4.2	0.5	0.5	16.5	10.7	11	3 - 5
	ECHP-02026		26	1	0.28	2	10	5	26.9	4.2	0.5	0.5	16.5	10.7	11	3 - 5
2	ECHP-04009		9	2	0.28	1.3	8	4	33.5	4.2	0.5	0.5	17.3	10.7	11	4 - 6
	ECHP-04013		13	2	0.28	2	10	5	36.0	4.2	0.5	0.5	17.3	10.7	11	4 - 6
	ECHP-04026		26	1	0.39	4	19	10	36.0	4.2	0.5	0.5	17.3	12	13.6	4 - 6
3	ECHP-06006		6	3	0.28	1.3	10	5	20.7	4.2	0.5	0.5	20.7	10.7	11	5 - 7
	ECHP-06009		9	3	0.28	2	10	5	30.2	4.2	0.5	0.5	20.1	12	13.6	5 - 7
	ECHP-06017		17	2	0.39	4	19	10	41.8	4.9	0.6	0.6	20.1	12	13.6	5 - 7
5	ECHP-10010		10	2	0.43	4	19	10	44.3	5.5	0.6	0.6	20.5	12	13.6	5 - 7

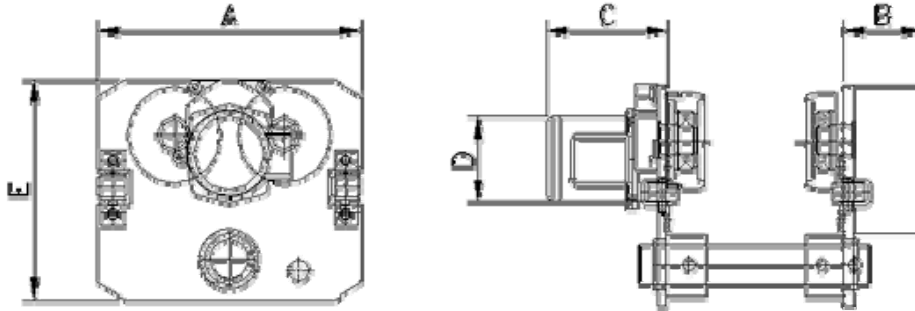
Headroom (H) is based on 10 ft lift: *for details on other capacities, please call for more information.

LOW HEADROOM MOTORIZED TROLLEY



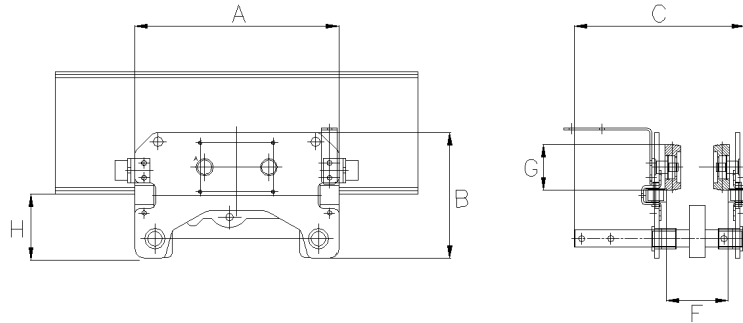
Capacity (ton)	Model Number	No. of Chain Falls	Trolley Motor						A (in)	B (in)	C (in)	D (in)	E (in)	F Flange Width Range (in)	H (in)
			50 fpm			100 fpm									
			HP	Rated Current		HP	Rated Current								
				@ 230V (amp)	@ 460V (amp)		@ 230V (amp)	@ 460V (amp)							
1/4	MT-020-1	1	0.5	1.34	0.68	0.5	1.53	0.76	16.5	11.3	8.7	4.1	12.5	4-8	5.23
1/2	MT-020-1	1	0.5	1.34	0.68	0.5	1.53	0.76	16.5	11.3	8.7	4.1	12.5	4-8	5.23
1	MT-020-1	1	0.5	1.34	0.68	0.5	1.53	0.76	16.5	11.3	8.7	4.1	12.5	4-8	5.23
2	MT-040-2	2	0.5	1.34	0.68	0.5	1.53	0.76	17.3	11.3	8.7	4.1	12.5	4-8	5.23
	MT-040-1	1	1	1.34	0.68	1	2.13	1.07	17.3	11.6	8.7	4.1	12.5	4-8	5.23
3	MT-060-3	3	1	1.34	0.68	1	2.13	1.07	20.6	11.3	8.7	4.1	12.5	4-9	5.23
	MT-060-2	2	1	1.34	0.68	1	2.13	1.07	20.0	11.4	8.7	4.9	15.2	5-10	5.72
5	MT-100-2	2	1	1.34	0.68	1	2.13	1.07	20.4	13.3	10.5	5.5	15.2	5-10	6.47

STANDARD MOTORIZED TROLLEY



Capacity (ton)	Model Number	No. of Chain Falls	Trolley Motor						A (in)	B (in)	C (in)	D (in)	E (in)	Flange Width Range (in)
			50 fpm			100 fpm								
			HP	Rated Current		HP	Rated Current							
				@ 230V (amp)	@ 460V (amp)		@ 230V (amp)	@ 460V (amp)						
7.5	MT-150-3	3	1	1.34	0.68	1	2.13	1.07	17.7	12.4	10.6	6.7	14.2	6 - 11
10	MT-200-4	4	2 x (1)	2 x (1.34)	2 x (0.68)	2 x (1)	2 x (2.13)	2 x (1.07)	20.1	14.7	10.9	7.9	15.1	6 - 11
15	2 x (MT-150-3)	6	2 x (1)	2 x (1.34)	2 x (0.68)	2 x (1)	2 x (2.13)	2 x (1.07)	n/a	n/a	n/a	n/a	n/a	n/a
20	2 x (MT-200-4)	8	4 x (1)	4 x (1.34)	4 x (0.68)	4 x (1)	4 x (2.13)	4 x (1.07)	n/a	n/a	n/a	n/a	n/a	n/a

LOW HEADROOM PUSH TROLLEY



Capacity (ton)	Model Number	Dimension (in)							
		A	B	C	D	E	F	G	H
1/4	PT-005-1	16.54	10.12	13.78	6.08	5	4-8	4.17	5.23
1/2	PT-010-1	16.54	10.12	13.78	6.08	5	4-8	4.17	5.23
1	PT-020-1	16.54	10.12	13.78	6.08	5	4-8	4.17	5.23
2	PT-040-2	17.32	10.12	13.78	6.08	5	4-8	4.17	5.23
	PT-040-1	20.00	10.87	16.93	6.08	5	4-8	4.92	5.23
3	PT-060-3	20.67	10.12	13.78	6.08	5	4-9	4.17	5.23
	PT-060-2	20.00	10.87	16.93	6.08	5	5-10	4.92	5.72
5	PT-100-2	20.47	12.68	16.93	6.46	5	5-10	5.47	6.47